



BUILDING TOGETHER TO CREATE A CENTER FOR THE FUTURE

INTERFAITH NEIGHBORS IS MEETING THE MOMENT WHEN IT COMES TO PLANNING FOR GENERATIONS TO COME.

This will be a one-of-a-kind Center, and we are proud to name it in honor of our unique and inspirational founder, Joe Marmora.

The Marmora Community and Education Center will span approximately 35,000 square feet, welcoming all to the heart of Asbury Park's West Side. Working together in this thoughtfully-designed, environmentally friendly space, we will overcome issues, explore solutions and assist the community and all who live here to realize their full potential.



THE HEARTBEAT OF THE NEIGHBORHOOD

The Marmora Family Community and Education Center will be home to:

- >> 12-15 Affordable Housing Units
- >> Interfaith's Innovative Launch Center
- >> Early Childhood Learning Center for Children Ages Three to Five
- >> Cultural Community Center
- >> Nutrition Services
- >> Interfaith Headquarters



THE MARMORA FAMILY & EDUCATION CENTER WILL BE HOME TO:

AFFORDABLE HOUSING

- > 12-15 affordable studio and 2-bedroom rental units each with private, outdoor balcony
- > Designed for those transitioning to independent living from shelters or supportive housing

CULTURAL COMMUNITY CENTER

- > Support and showcase emerging and established visual and performing artists with neighborhood roots
- > Build on the West Side's rich cultural heritage with an emphasis on African-American contributions

THE LAUNCH CENTER

- > Training, conference, and classroom space to accommodate up to 60 program participants
- > Computer lab for online access to self-guided development programs and job searches

NUTRITION SERVICES

- > State-of-the-art commercial kitchen with capacity to produce 1,500+ meals per day for seniors and/or physically disabled
- > Catering capacity for on- or off-site events

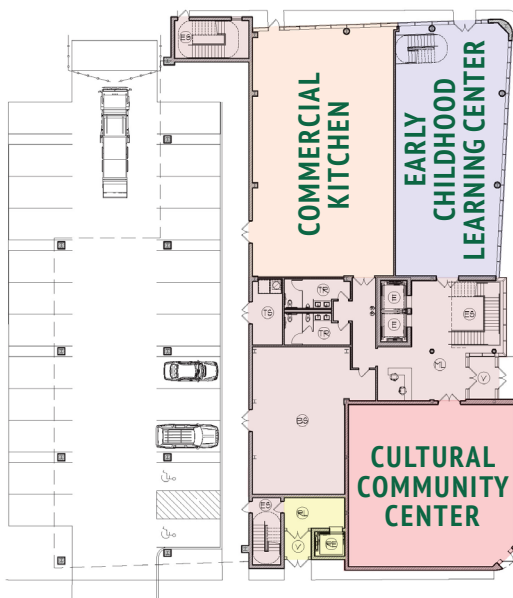
EARLY CHILDHOOD LEARNING CENTER

- > Pre-K (4-5 yr. olds) early child learning and development for 30-35 students
- > Curriculum designed in the Montessori tradition

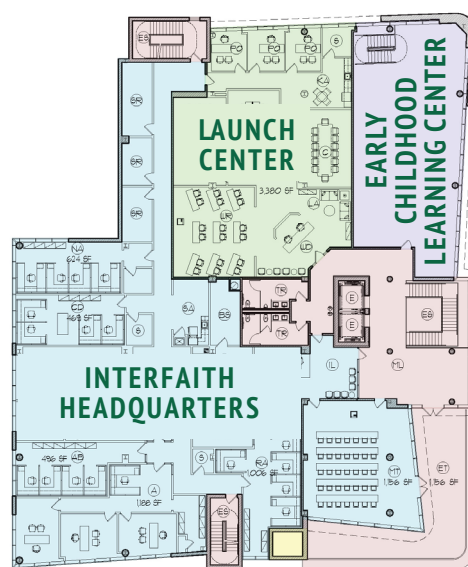
INTERFAITH HEADQUARTERS

- > Offices for Administrative, Homeless Prevention, Real Estate Development and Fundraising staff
- > Conference and community gathering spaces to accommodate up to 40 people

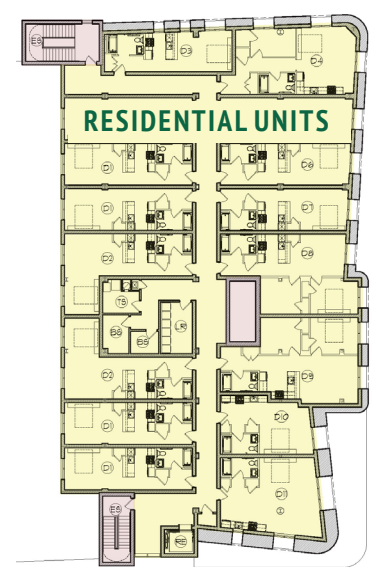
FLOOR PLAN



FIRST FLOOR PLAN
11,650 SF 1" = 20'



SECOND FLOOR PLAN
17,933 SF 1" = 20'



THIRD FLOOR PLAN
12,132 SF 1" = 20'