

INTERFAITH NEIGHBORS, INC.

2022 ANNUAL REPORT



MISSION STATEMENT

To assist the most vulnerable in securing life's critical necessities, while working to improve the quality of life for individuals, families and their communities.

BOARD OF TRUSTEES

Rabbi Sally Priesand
President

Vincent Petrziello
Vice President

Joseph J. Marmora
Executive Director Emeritus/Treasurer

Walter "Chip" Craig
Co-Executive Director/Secretary

Paul L. McEvily
Executive Director

Kathleen Ellis

Robert E. Hogan

Edward D. Johnson

David S. Kountz, MD

Gwendolyn O. Love

Carol Ann McLaughlin

Pam Saunders



ADVISORY BOARD

Don Brockel

Dennis Donato

John Heavey

Tom Kononowitz

John Marmora

Lynn F. Miller

Sandy Mullaney

Carlo Sestito

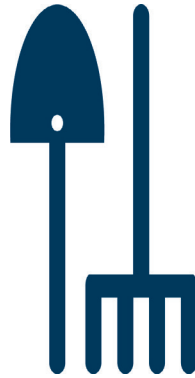
James Vaccaro

INTERFAITH NEIGHBORS 2022 BY THE NUMBERS



Interfaith Neighbors

Neighbors Helping Neighbors



3,915

pounds of produce harvested

10

restaurant customers

312

hours of employment for 5 Kula Farm Experience Trainees

250

hours of volunteer service provided by 91 volunteers

9

Farm to Table dinners & 2 cocktail parties

381

Kula Farm community workshop attendees

969

Kula Farm student visitors



134

Help Desk Clients served

15

SOAR colleagues graduated through 3 cohorts

21

Life Coaching clients

15

Small Business Coaching clients

1,255

donors to Interfaith Neighbors



300

families received fresh produce via

15

Community Food Connection Partner Pantries

100

families served with Holiday Adopt-A-Family Program



298

families supported with Rental & Mortgage Assistance

6

new home owners at IFN's Parkview AP Project

329,000

meals provided to 1,031 seniors and disabled persons through Meals on Wheels

124

volunteers supported by Interfaith Neighbors staff deliver meals every day

1

year of Meals on Wheels

COST OF:

=

1

day in the hospital

=

10

days in a nursing home



AUDITED COMBINED STATEMENT OF ACTIVITIES AND CHANGES IN NET ASSETS

Year ended December 31, 2022

Audit performed by WithumSmith + Brown, PC

	<i>Without Donor Restrictions</i>	<i>With Donor Restrictions</i>	<i>Total</i>
<i>Revenues and Other Supports</i>			
Donations and Grants	\$11,320,914	\$1,336,981	\$12,657,895
In kind Services	360,820	-	360,820
Donated Securities	-	758,278	758,278
Special Events, Gross Revenues	178,924	-	178,924
Special Events, Expenses	(67,393)	-	(67,393)
Investment Income	37,059	169,144	206,203
Realized & Unrealized Gain (Losses) on Marketable Securities	44,944	(493,220)	(448,276)
Sale of Assets Available for Sale, Net of Costs of Sales	(603,091)	-	(603,091)
Rental Income	192,223	-	192,223
Miscellaneous Income	30,594	-	30,594
	<u>11,494,994</u>	<u>1,771,183</u>	<u>13,266,177</u>
 Net Assets Released from Restrictions			
Satisfaction of Program Restrictions	<u>1,161,280</u>	<u>(1,161,280)</u>	<u>-</u>
Total Revenue & Other Support	<u>12,656,274</u>	<u>609,903</u>	<u>13,266,177</u>
 <i>Expenses</i>			
Program Services	5,829,074	-	5,829,074
Supporting Services			
Management & General	325,328	-	325,328
Fundraising	196,763	-	196,763
Total Expenses	<u>6,351,165</u>	<u>-</u>	<u>6,351,165</u>
 <i>Change in Net Assets</i>	<u>6,305,109</u>	<u>609,903</u>	<u>6,915,012</u>
 <i>Net Assets</i>			
Beginning of Year	<u>11,176,466</u>	<u>6,307,079</u>	<u>17,483,545</u>
End of Year	<u>\$17,481,575</u>	<u>\$6,916,982</u>	<u>\$24,398,557</u>

\$0.92 of every dollar goes to programs and services.

SUMMARY OF PHILANTHROPIC SUPPORT

Gifts from generous donors immediately support Interfaith Neighbors' mission. Ninety-two cents of every dollar spent at Interfaith Neighbors goes to a benefitting activity.

Giving to Interfaith Neighbors in 2022 falls into four categories: Annual Support, Special Events Net Revenue, Capital Campaign Revenue, and General Endowment Giving. The totals below constitute outright gifts to the organization and payments received on pledges in each of the four categories received by Interfaith Neighbors between January 1, 2022 and December 31, 2022. These totals will not align exactly to the audited financials as they are reported by the date the donor made the gift to the organization.

<i>Annual Support Total</i>		<i>\$1,197,706.88</i>		<i>12%</i>
Annual Support Restricted by Program		716,957.25		
Unrestricted		480,749.63		
<i>Special Events Net Revenue</i>		<i>\$125,564.00</i>		<i>1%</i>
<i>Capital Campaign Total</i>		<i>\$8,758,930.16</i>		<i>87%</i>
Capital Campaign Unrestricted		6,747,845.34		
Capital Campaign Kula Farm Restricted		531,575.00		
Capital Campaign Early Childhood Center Restricted		479,509.82		
Capital Campaign SOAR Endowment		1,000,000		
<i>General Endowment J. Marmora Fund</i>		<i>\$6,000</i>		<i>0%</i>
<i>TOTAL RECEIVED</i>		<i>\$10,088,201.04</i>		



MEETING THE MOMENT

The Campaign for Interfaith Neighbors

In 2021, Interfaith Neighbors launched its first capital campaign for support with a goal of securing gifts and pledges totaling \$18,000,000 to support the funding of three capital projects that are critical to the future of the organization: The Marmora Center, Early Childhood Learning Center and Kula Farm Expansion Project. The campaign also includes goals to support the growth of its endowment. Since the launch of the campaign, through December 31, 2022, the campaign has secured \$15,458,143 in support towards its goal, including pledges and outright gifts.

HOMELESS PREVENTION THROUGH RENTAL & MORTGAGE ASSISTANCE

IN 2022, INTERFAITH NEIGHBORS HELPED 298 MONMOUTH COUNTY FAMILIES REMAIN IN THEIR HOMES AND AVOID HOMELESSNESS

In 2022, Interfaith Neighbors' Rental and Mortgage Assistance Program assisted 298 Monmouth County households with rental and mortgage payments to avoid homelessness. \$635,962.26 of assistance was provided to these 298 households. Our Rental and Mortgage Assistance Program provides this assistance to those facing financial setbacks due to unforeseen circumstances, allowing individuals and families to remain in their home and fulfill other necessary financial obligations such as groceries and utility bills. The average amount of assistance provided per household was \$2,134.10. Funding support for the Rental & Mortgage Assistance Program is provided through state and county grants, as well as private and corporate donations.

Judy Nelan, the Senior Manager of Homeless Prevention through Rental and Mortgage Assistance, explained how abundant the need is, with many still recovering from job loss due to the COVID-19 Pandemic. She described some of the program's current challenges, stating, "most of the grants we receive to assist people who have fallen behind in their housing payments require rent to be affordable for the recipient going forward, and this is becoming harder to achieve due to increasing housing prices. We're having to refer significantly more people to other agencies, and there have been numerous people returning for additional assistance who were previously helped with one or two months of rent."

Each year during the holiday season, the Rental & Mortgage Assistance Program reconnects with families supported by the program throughout the year with the Adopt a Family Holiday Program. Members of the Interfaith Neighbors team along with generous individuals, corporations, and private foundations are matched with families that have received assistance during the year and are continuing to work their way back to financial stability. In 2022, over 100 families were adopted. This program has transitioned to providing grocery store gift cards during the Thanksgiving season, instead of turkeys, since the COVID-19 Pandemic. Upon the passing of Ginny Marmora, wife of Interfaith Neighbors' founder Joe Marmora, Ginny's Pantry was established by a group of her friends and family. Ginny's Pantry collects funds throughout the year to provide grocery store gift cards for families we assist throughout the year who are facing rising food prices and financial instability.

The Rental and Mortgage Assistance Program continues to provide stability for individuals and families facing financial setbacks by assisting them in paying their rent and mortgages. This homeless prevention work has been extremely critical in 2022, and the program will continue to assist those struggling in any way it can.



Each year, donors, Gene & Karen Morton, donate bicycles to Interfaith Neighbors for families served through the Holiday Program.

BUILDING HEALTHIER, MORE EQUITABLE COMMUNITIES

IN 2022, 300 FAMILIES RECEIVED FREE FRESH PRODUCE THROUGH A COLLABORATIVE OF 15 FOOD PANTRIES AND COMMUNITY SPACES PROMOTING FOOD JUSTICE IN ASBURY PARK AND THE SURROUNDING AREA.



Asbury Park Councilwoman Yvonne Clayton addresses guests at the BHEC convening at Springwood Park.

In 2021, Interfaith Neighbors was selected to participate in the Building Healthier, More Equitable Communities (BHEC) initiative lead by the Reinvestment Fund and to lead a multi-disciplinary BHEC collaborative in Asbury Park. The BHEC initiative addresses the social determinants of health through changes to the built environment and the community investment system in Asbury Park and three other New Jersey cities including Camden, Newark, and Paterson.

In September 2022, the Asbury Park BHEC coalition, led by Interfaith Neighbors, hosted 60 people from the three BHEC sister cities, leaders from the state of NJ, the Robert Wood Johnson Foundation, and the Reinvestment Fund for the first BHEC Convening. Topics including food justice, affordable housing initiatives and advocacy, and recovery from health and economic crises were discussed. Most importantly, relationships between people from the various cities were formed, allowing for the sharing of information, resources, and ideas of how to work together to flourish.

Community Food Connection is one of the main components of the BHEC initiative in Asbury Park, a community-led coalition organized by BHEC Coordinator, Karyn Moskowitz. The mission of the Community Food Connection is to shift the power, health, and wealth of historically marginalized communities by developing community-driven solutions to inequities within the Monmouth County, NJ regional food system. In 2022, Community Food Connection created the first ever food pantry coalition in Monmouth County, which promotes sharing of resources, implements the Farm to Food Pantry Initiative and performs

collaborative strategic planning with over 80 members. The Farm to Food Pantry Initiative is a 25-week initiative providing free, seasonal, farm-fresh produce to 300 families each day of the week through a network of 15 participating food pantries and community spaces. The organic, seasonal produce is grown by a family-owned farm, Fernbrook Farms, located in Chesterfield, NJ and paid for by Interfaith Neighbors through BHEC Initiative grant funding and individual donations. In addition to the fresh produce provided to pantries, Community Food Connection created nutritious, plant-based recipes utilizing weekly produce to distribute so that those not used to preparing this produce could learn how.

In 2022, Community Food Connection also engaged in food justice advocacy. The coalition helped introduce the only SNAP certified farmers' market, Asbury Fresh, in Monmouth County and assisted in securing a grant to double all sales. This helped 25 families gain access to seasonal, organic, farm fresh produce. Community Food Connection also advocated for policy change at the state level, including changing the definition of a "food desert" to include social factors such as race, ethnicity, and marital status. The Asbury Park BHEC coalition additionally partnered with three other BHEC NJ cities (Atlantic City, Camden, and Newark) to create a statewide Inclusive Markets Committee, which advocates for policies that bring more federal nutrition benefits to Monmouth County. Community Food Connection and the BHEC Initiative made significant strides in promoting food justice in Monmouth County and the state of New Jersey in 2022.



Fresh produce being distributed at a local pantry through the Community Food Connection.

SENIOR NUTRITION - MEALS ON WHEELS MONMOUTH COUNTY

DURING 2022, INTERFAITH NEIGHBORS STAFF AND VOLUNTEERS PROVIDED APPROXIMATELY 1,100 SINGLE MEALS EACH WEEKDAY TO HOMEBOUND SENIOR CITIZENS AND DISABLED PERSONS ACROSS MONMOUTH COUNTY.



Interfaith Neighbors' Meals on Wheels Program of Monmouth County continues to provide seniors and disabled persons in need free meals and a friendly face. During 2022, Interfaith Neighbors staff and volunteers provided approximately 1,100 meals each weekday to homebound senior citizens and disabled persons across Monmouth County. In total, over 329,000 meals were delivered via 69 routes. Delivery was carried out through a combination of paid drivers and up to 125 volunteers each day. Meals are delivered to individuals in their homes or at congregate sites, including senior centers in Asbury Park, Neptune, Howell, Red Bank, Middletown, Keyport, and Keansburg. In addition, the Bradley Beach and Long Branch senior centers continued as auxiliary sites where volunteers pick up meals and deliver them to residents in their homes.

The Senior Nutrition/Meals on Wheels program is Interfaith Neighbors' largest program with a budget of \$2.2 million in 2022. The majority of these funds, approximately \$1,850,000, comes from government sources – Title III, USDA, and Monmouth County appropriations. The balance of \$350,000 is raised by Interfaith

Neighbors through private grants, individuals, and corporate donations, which is critical to our ability to provide the program.

Our program served 1,031 senior citizens and disabled persons with meals in 2022. 600 breakfasts were served each day to the most vulnerable recipients and delivery of two meals on Saturday mornings to one-fourth of the program's clients who have reported having no one to assist them on weekends and holidays. Our services will continue bringing nutrition, stability, and peace of mind to seniors across Monmouth County.

KULA URBAN FARM

KULA URBAN FARM PROVIDES JOBS AND EDUCATION TO MANY FROM ACROSS MONMOUTH COUNTY WHILE DONATING OVER 3,900 POUNDS OF FRESH PRODUCE TO THE COMMUNITY.

In 2022, Kula Urban Farm had another impactful year filled with successful produce yields and sales, workshops and classes for children and adults, farm to table dinners and cocktail parties, entry level jobs, and produce donations to the community. Ten restaurants were regular customers buying produce, and the farm welcomed numerous residents on Fridays that purchased produce online. Kula also donated 3,915 lbs. of produce, most of it being distributed to the Bethel AME Food Pantry, which is located on the lot adjacent to the farm. Kula Farm's relationship with the Bethel AME Food Pantry has continued to flourish and the produce provided is tailored to the cultural preferences of those acquiring food from the pantry.

The Farm Without Borders, established in 2017 and located behind the old Turf Club, is another source of produce for the community. This once vacant lot turned garden oasis welcomes community members to come plant and harvest produce, while being overseen and managed by Kula job trainees and volunteers. In 2022, 91 volunteers completed 255.5 hours.

Five Kula Farm Experience job trainees worked a collective of 312 hours in 2022. The Kula Farm Experience is a short-term job program designed to reinforce basic workplace skills for local members of the community who are struggling to maintain stable work or are reentering the workforce after a hiatus. Kula hopes to eliminate barriers to future employment by offering a positive work environment with room for personal goal achievement. Trainees learned about hydroponics, gardening, plant biology, and assisted with various tasks in the Kula Farm greenhouse and Farm Without Borders.



Farm to Table Dinner at the Kula Urban Farm.

Hospitality events at the farm including farm to table dinners and cocktail parties flourished like never before in 2022! Nine farm-to-table dinners with notable local chefs and two cocktail parties were organized in 2022, with a total of 403 guests attending.

New records were also set for Kula in attendance of students who came to learn about gardening, nutrition, plant biology, and more. An impressive 969 students attended classes at the farm in 2022. In addition to classes for students, workshops in numerous subjects including nature printmaking, kimchi making, yoga and meditation, gardening and more for a variety of age groups were successfully given. 381 people attended a workshop in 2022.

An additional 686 people visited the farm apart from the registered classes, workshops, and events. Some groups who visited for tours, field trips, and other reasons include Hope Academy Charter School, the Asbury Park Restaurant Tour,

Voyagers' Elementary School, Fulfill, Asbury Park's Got Talent, Wall High School, KYDS Summer Camp, the New Jersey Food Justice Coalition, Neptune Middle School, Inspire Life Camp, Advocates for Children of NJ, Claire Taylor Foundation, Grown In Monmouth Camp, Sisters Academy of New Jersey, OceanFirst Bank, and several Boy and Girl Scout groups.

A vermiculture (worm) farm and solar powered herb dryer are new additions to Kula in 2022. Kula also manages a large community compost site, which has a drop off at the Farm Without Borders. Kula has provided compost educational tools for those looking to do so at home or those who drop it off at the farm, such as signage and composting workshops. Educational signage has also been recently added regarding the importance of pollinators.

Whether someone is visiting the farm for a tour, taking a workshop, harvesting produce from the Farm Without Borders, or attending a farm-to-table dinner, Interfaith Neighbors and Kula Farm intends to offer education, nutrition, and a sense of community to those engaging.



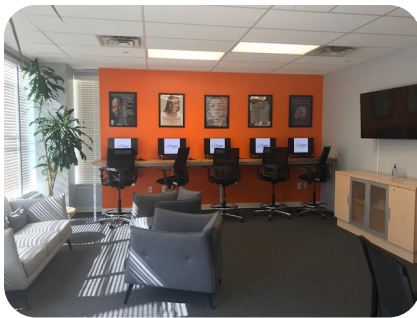
Community produce harvest for Bethel AME food pantry.



Students learning about seeds and pollination at the farm.

LAUNCH CENTER

THE LAUNCH CENTER ADDRESSES ECONOMIC STABILITY AND SECURITY BY HELPING MEMBERS OF THE COMMUNITY ACCESS RESOURCES, DEVELOP SKILLS, AND CONNECT TO EMPLOYMENT.



Launch Center Computers and Help Desk Area

The Launch Center is a place for those in the community to launch their careers, launch their businesses, or launch their lives. It's the perfect starting point for someone who doesn't know how to take the first step towards a better life, career, or business venture. The Help Desk is the introductory component of the Launch Center, which meets individuals where they are on their journey and can help with various tasks or refer them to another component of the Launch Center. 134 Help Desk Clients were served in 2022. Clients served at the Help Desk come for various needs including assistance with a resume, printing forms, assistance with applying for government aid, job search, housing search, and looking for mental health services. Sometimes Help Desk clients are "one-offs," while others continue with recurring life coaching, small business coaching, or enter the rigorous career pathway training, SOAR. In 2022, the Launch Center received 21 Life Coaching clients and 15 Small Business Coaching clients. The Launch Center is there for anyone in the community who needs life, business, career advice, or may not know where to begin on their personal growth.

The SOAR Program assists individuals who qualify soar into meaningful and lucrative careers. In 2022, 15 SOAR colleagues graduated through three cohorts. The program assists colleagues in maximizing their potential and entering a career path that suits their strengths and passions. SOAR Colleagues participate in intensive success skills training, earn a scholarship into a fast-track

professional certification program and become eligible for a wide range of support services to ensure success. Some career pathways that colleagues are guided into include Business Office Support Specialist (BOSS), Commercial Driver's License (CDL), Computer Service Technician, Automotive Technician, Solar Installer with Commercial Roofing Certificate, Medical Billing & Coding, and Medical Assistant Plus (includes Patient Care Tech, EKG, Phlebotomy, and Medical Assistant certifications).

SOAR is a barrier-busting program, which helps eliminate obstacles such as child-care and transportation costs, allowing colleagues to give their full attention and time to their studying and training. The program also includes a long-term career mentoring component for program participants to help them navigate their new career and seize opportunities when they arise for two full years after SOAR graduation. At the end of 2022, SOAR graduates were earning an average of \$67,847 per year, which represents an increase of 591% over pre-enrollment earnings. This financial stability, as well as personal growth and achievement, is what SOAR aims to accomplish by assisting colleagues in placement in meaningful careers.



SOAR Colleagues presenting their certificates of completion of IFN SOAR Training.

COMMUNITY ENGAGEMENT

IFN ENGAGES THE LOCAL COMMUNITY TO ENSURE THAT OUR PROGRAMS AND SERVICES ARE ADDRESSING COMMUNITY NEEDS AND CONNECTING TO THOSE WHO NEED THEM.

In 2022, Interfaith Neighbors [IFN] completed its third year of the Wells Fargo Regional Foundation Implementation Grant, which began in 2020. This comprehensive plan that focuses on the West Side neighborhood of Asbury Park [AP] includes revitalization strategies in the areas of employment & economy, housing & neighborhood quality, placemaking, community health, youth education, and communication. IFN is the lead agency in a four agency collaborative working to implement the Westside Neighborhood Revitalization Plan. In addition to program investments, each year it funds one mural project, Asbury Park's Got Talent [APGT], and additional community engagement projects.



Community Outreach Specialist Diane Shelton at the City of AP's Trunk or Treat event.

The third annual APGT took place on May 14, 2022, bringing the community together for entertainment and self-expression in Springwood Park. Other community engagement events in Asbury Park that Interfaith Neighbors and the IFN Community Outreach Specialist participated in and/or supported throughout the year include the Juneteenth Celebration at Springwood Park, the 2022 United Festival, National Night Out, Meet the Needs & City of AP Quality of Life Community Festival, and the City of AP Recreation Dept's Trunk or Treat.

Community Outreach Specialist, Diane Shelton, continued fostering relationships with community groups, initiatives, and organizations, such as The Greater AP Community Development Initiative, Prevention Coalition of Monmouth County, City of AP Quality of Life Committee, Mayor's Health & Wellness Committee, AP Chamber of Commerce, AP Public Library, Westside Citizen's United, and AP School District's Early Childhood Advisory Council. Partnerships also continued with AP African American Music Project (AP AAMP), Monmouth University Comm. Dept., and the AP Public Library to further research and planning in the development of the Springwood Avenue Rising Heritage Walk. Springwood Ave Rising aims to offer a variety of opportunities for community members to participate in experiences that will honor the past of the West Side AP community, celebrate the present, and prepare for the future.

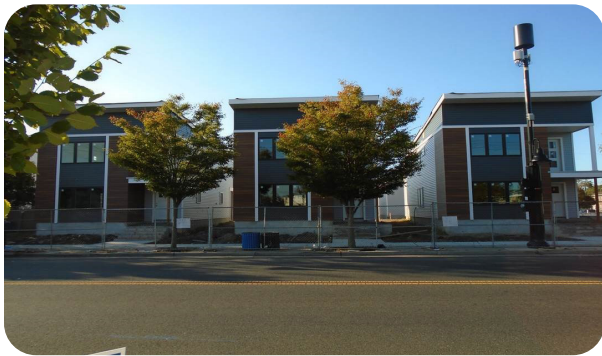
The third mural project, funded by the Wells Fargo Implementation Grant, was a youth-led project painted on the Boys & Girls Club of Monmouth County Clubhouse in Asbury Park. Boys & Girls Club of Monmouth County Summer Camp participants were given the opportunity to take part in the vision and creation of this mural. Interested campers were selected to participate in the BGMC Art Club and instructed by a local artist, Jason Sissino. Jason instructed the class and guided the installation project of this beautiful mural, making it a youth-led, adult-guided project.



Boys & Girls Club summer camp participants with local artist Jason Sissino painting the mural.

NEIGHBORHOOD REVITALIZATION

CONTINUED CAPITAL INVESTMENTS IN THE WESTSIDE NEIGHBORHOOD OF ASBURY PARK CONTINUE TO CREATE TRANSFORMATIONAL CHANGE.



Three of the ten Parkview AP homes under construction along Springwood Avenue, Asbury Park.

In 2019, Interfaith Neighbors began construction of its first mixed-income home ownership project, Parkview AP. This project, located along Springwood Avenue across from Springwood Park in the Westside Neighborhood of Asbury Park, will consist of ten three-bedroom single family homes, each with a detached one-bedroom garage apartment that can be used as an income producing rental. After many delays and supply-chain issues as a result of the COVID-19 pandemic, the project is moving ahead. By the close of 2022, six homes have been completed, sold and are occupied. Two of these were purchased by low-to-moderate income purchasers, and the other four were purchased at market rate. The remaining four properties, currently under construction, all have contracted purchasers and will be completed in 2023.

In May 2022, IFN celebrated the groundbreaking for the Early Childhood Learning Center, one of the three capital projects funded by the Meeting the Moment Campaign. Campaign Chair, Peter Cancro, has a

passion for early childhood education and challenged Interfaith Neighbors to take on this important project. "We've got to activate learning with kids at the start, from the very beginning, before kindergarten," said Cancro.

Construction on the Early Childhood Learning Center, located on Atkins Avenue, Asbury Park, began in June 2022 and is projected to be completed by Fall of 2023. Interfaith Neighbors has engaged a steering committee of local parents to assist in community engagement. The school will serve up to 30 children with an educational curriculum based on the Montessori education model.



Chip Craig, Co-Executive Director, and Kerwin Webb, Director of Strategic Initiatives at the Early Childhood Learning Center Groundbreaking

2022 JOSEPH J. MARMORA GOLF OUTING

OVER \$125,000 IN NET PROCEEDS RAISED AT THE 2022 GOLF OUTING TO SUPPORT RENTAL & MORTGAGE ASSISTANCE FOR MONMOUTH COUNTY FAMILIES



160 golfers hit the greens at Deal Golf & Country Club for IFN's 2022 Golf Outing to benefit IFN's Rental & Mortgage Assistance program. The dedicated Golf Committee did it again, securing \$125,564 in net revenue. Joe Marmora made the rounds visiting with guests and the staff at Deal Golf & Country Club, thanking them all for their support. Many thanks to all the generous sponsors, golfers, guests and donors who made the day another success.



PLATINUM SPONSORS

Brian & Janel Griffin
Joseph & Ginny Marmora
Jersey Mike's Subs

GOLD SPONSORS

Builders' General
Hackensack Meridian Health System
Richard Meyer

GREENS SPONSORS

The Brockriede Family
The Detail Doctor
Benjamin Harvey Company

PROGRAM SPONSORS

Lee Albanese
Burt Barham
Larry Downes
Richard & Dorothy Fama

John & Joanne Heavey
Frank & Brenda Mergenthaler
Morgan Stanley
Mike Paolercio
New Jersey Natural Gas
PNC Bank
Sestito Financial Services
Shore Point Architecture

NEIGHBORS HELPING NEIGHBORS TEE SPONSORS

Anderson Windows
Arnone, Golden & Hanlon, Monmouth
Gaughran Law Firm
Margo & Paul Hooker
Scott Kuzmic
Joe & Sue Lemanowitz

Lewis Consulting
Doug MacMillan
Manasquan Bank
Masonite Doors/Bridgewater Wholesale
Brian & Emily McEvily
Monmouth Medical Center
Navesink Wealth Management
Senator Declan O'Scanlon
Paul V. Fernicola & Associates
Purr N Pooch
Shaw Construction
Roger Stein, CPA
Supino, James & Patricia
Visiting Nurse Association Health Group

HONOR ROLL OF DONORS

TOTAL GIVING IN 2022

(Includes all giving and soft credit.) The Leaders Society Recognizes donors who have contributed a total of \$1,000 or more in a fiscal year.

\$1,000,000 or Greater

Peter & Tatiana Cancro
Judith & David Rivkin Foundation
New Jersey Department of Community Affairs

\$250,000 - \$999,999

Vincent and Ellen Forlenza
Abe and Linda Littenberg
Monmouth County
The Paul & Margo Charitable Fund

\$100,000 - \$249,999

Bank of America
Justin and Victoria Gmelich
Grunin Foundation
Regional Foundation
Reinvestment Fund
United Way of Monmouth & Ocean Counties

\$50,000 - \$99,999

Blair Family Foundation, Inc.
The Boye Foundation, Inc.
Builders' General Supply
Gannett Foundation, Inc.
The Jules L. Plangere Family Foundation
Mary Owen Borden Foundation

\$25,000 - \$49,999

Jason & Kristin Brauth
Laurence M. Downes
Steven & Amy Erlbaum
Robert & Julie Goldstein
Hackensack Meridian Health System
Thomas & Carolyn Kononowitz
Diane Sheng
Spring Lake Presbyterian Trust
The Stone Foundation of New Jersey
Tzedakah Foundation

\$10,000 - \$24,999

Anthony & Concetta Ambrosio
Bagley Family Gift Fund
Patricia Bailey
Beim Family Fund

Donato, Hayes & Co.
First Energy Foundation
Brian & Janel Griffin
Robert & Judy Hogan
Jersey Mike's Franchise System
LB & TD Foundation
Joseph & Susan Lemanowicz
The M&T Charitable Foundation
James & Linda Marmora
Joseph & Ginny* Marmora
Minding Your Mind
OceanFirst Foundation
PNC Foundation
St. Mary's of the Assumption
TD Charitable Foundation

\$5,000 - \$9,999

Benjamin Harvey Company, Inc.
Linda Brockriede
Walter "Chip" & Andrea Craig
CUMAC/ECHO, Inc.
Peter & Linda Eno
Food Circus Super Markets, Inc.
Shawn Gatta
Mary Giunco
Margean V. Gladysz
John & Joanne Heavey
Thomas & Bonnie Johnson
John & Kathy Marmora
Roy & Barbara Medile
John & Margaret Michalowski
Charles & Trudy Parton
Plymouth Rock Foundation
Patrick Roddy
Rumson Community Appeal
St. Jerome Roman Catholic Church
Whelan Foundation

\$2,500 - \$4,999

Burt & Carol Barham
Buckelew Family Foundation
Chrissy Memorial Fund
John & Catherine Conover, III
Conroy Real Estate
Dennis & Diane Donato
Katherine Durante
Fair Haven Community Appeal
Richard & Dorothy Fama
Bob & Eileen Gilmore
Greenberg Traurig

Robert & Susan Hayes
Andrew Kelly, Esq.
John & Bertha Livingston
Michael & Rosemarie Lyons
Paul Marmora
Patrick & Maureen McLaughlin
Frank & Brenda Mergenthaler
Bruce Meyer
Rich Meyer
Monmouth Park Charity Fund, Inc.
Morgan Stanley
The Munshine Group, LLC
Melissa Murray
New Jersey Natural Gas
Nitram Foundation
NJM Insurance Group
PNC Bank
Seabrook Village
Carlo Sestito
Shore Point Architecture, P.A.
St. George's by-the-River Episcopal Church

\$1,000 - \$2,499

Gloria Leyh Adler
ANDI Electric Corp
Asbury Park Homeowners Association
Asbury Park-Wall Elks No 128
Madeline Badalaty
Balanced Climate
Joseph & Jennifer Binns
Kevin Bormida
Jeffrey Breen
Eva Brezin
David & Bonnie Brienza
Don & Diane Brockel
Kevin & Mary Buell
Gail Bujold
Robert Calabrese & Scott Asalone
Alan Chang
Community Hope Fund, Inc
Paul W. Corliss
Richard & Denise Cumiskey
Colin Day & Heather Burke
Mark & Constance Duffy
Ezekiel Wheels
First United Methodist Church of Oakhurst
Brian & Kathleen Fitzpatrick

Gerald & Maryanne Freda
 Gavin & Patricia Gatta, Jr.
 Vincent Gifford
 William & Madeline Gilman
 Michael & Holly Gonzales
 Peter L. Graham
 Grant Engineering & Construction
 Grace A. Gratton
 Nancy W. Greene
 Daniel & Erica Grogan
 Michael* & Joyce Hatala
 Michael & Gail Hayes
 Thomas & Jill Hoffman
 Holy Trinity Lutheran Church
 Jewish Communal Fund
 King, Kitrick, Jackson, McWeeney & Wells, LLC
 Kevin & Midge Leys
 Walter J. Livingston
 Helen Love
 Robert & Marjorie MacAllister
 Joseph J. Marmora
 Marie E. Marmora
 Mr. James J. Marmora Jr.
 Quinn & Lisa McKean
 Mark & Carol Ann McLaughlin
 Thomas & Marianne McLaughlin
 Thomas & Catherine Metcalf
 Linda Mitchell
 Joseph Montano & Alyssa Peters
 Shawn Mulligan
 Nebula NJ, LLC
 New Jersey Resources
 James & Suzanne Nugent
 Kathleen Oakley
 OceanFirst Bank
 Chris & Janet Page
 Parish of St. Teresa of Calcutta St. Francis Society
 Michael & Beth Paterno
 Phoenix Manufacturing, Inc.
 Protestant Community of Seabrook Village
 Prudential Financial Inc.
 Joan Rechnitz
 Renova Environmental Company
 Joseph & Mary Ruggiero
 Justin Russo
 Conor Ryan
 Geoffrey Schroeder
 Phil & Linda Siciliano
 Thomas & Linda Sliben
 Cheryl Stavola
 Roger Stein, CPA
 Timothy 6:17 Foundation
 Leah Varn
 Richard & Linda Wright

\$500 - \$999

Auxiliary of Robert Wood Johnson University Hospital
 Cynthia Barham
 Carolyn Bateman*
 Bernard & Marion Berry
 BlackRock
 Charles F. Blue
 Bob & Maryann Korsen Charitable Fund
 Buckley Funeral Home
 Angelo Buda
 Elizabeth Budner
 Marlene Burgess
 Theresa Casares
 Mary Jane Celli
 Central Paint
 Mary Chiarello
 Joseph & Delia Cicchetti
 Michael & Helen Cichetti
 Mary Jane Cobb
 Stefanie R. Colton
 Vincent J. Covello
 Derek DeBree
 Nick & Marybeth Defabrizio
 Hugo Del Bove
 Jeffrey A. Delin
 Roger & Maureen Domal
 Jeannine Dresch
 Andrea Dudek
 Jane Egelhoff
 Food For Thought By The Sea
 Robert & Laura Garrett
 Ronald & Kathy Gillaspie
 William Grogan & Lori Senecal
 Ray & Mary Heslin
 Sue Hische
 Insurance Office of America
 iStar
 Ralph & Letitia Jensen
 Mary Jean Johnson
 Mark & Annette Kitrick
 David Kountz M.D.
 John & Sharon Kreger
 Louis & Karen La Cava
 Robert & Rita Labrecque
 Carl & Marie Lillvik
 John & Maureen Lloyd
 Andrew & Margaret Lombardo
 Manasquan Bank
 Manasquan United Methodist Church
 Norman & Lesley Margolies
 Lyle & Mary Marlowe
 Thomas Maruschak*
 Margaret McConnell
 Brian & Emily McEvily
 William & Pam McGovern
 Patrick & Jeanne McGuinness
 Eleanor McKeever

John B. Meagher
 Peter & Beth Micioni
 Conrad & Lynn Miller
 Monmouth Reform Temple
 Morris & Clara Weshnak Family Foundation, Inc.
 Rocco Morrongiello
 William & Sandy Mullaney
 Susanne Nelson
 The Network Development Team
 New York Jets
 Lynn O'Brien
 John Orifici
 Michael & Kara O'Shaughnessy
 Michael & Shawn Paolercio
 Andrew & Morgan Park
 Joseph & Irene Parker
 Madelyn Parr
 Paul V. Femicola & Associates
 Vincent & Roseanne Petruzzello
 Rose Pietropaolo
 Louis Pistilli
 James & Sheryl Powers
 Presbyterian Church at Shrewsbury
 Rabbi Sally Priesand
 The Prudential
 Rosanne H. Rapier
 Bernadette Reidy
 Donald & Kathleen Reilly
 Eleanor Rubin
 Susan Sala
 David & Pam Saunders
 Pamela A. Schlichting
 Ronald Schnoor
 Paula M. Schnorbus
 Ann Serafin
 Dolores Serra
 Robert Simpkin
 Robert & Carol Smith
 Marion K. Soltysiak
 St. Andrew's United Methodist Church
 St. John's Episcopal Church
 St. Paul's Ocean Grove Church
 Morgan Stierman
 Naomi Stuart
 Gloria Suydam
 TBD, Inc.
 Stuart & Cora Tuchband
 United Methodist Church of Red Bank
 Karen Van Buskirk
 Joseph P. Vassallie
 Visiting Nurse Association
 Rachel Wade
 Howard L. West, Sr.
 William & Lois West
\$250 - \$499
 Mary Theresa Abel
 Susan Abraham

AHS Rehab Outpatient Services-
Management Team
Asbury Park Dinner Table
Donna Andrucyk
Thomas & Alison Ankiewicz
Michael & Catherine Anthony
Dolores B. Ballard
Judith Bashover-Rubinstein
Sigfredo & Seferina Batista
George* & Margaret Bender
Bielat Santore Realty
Roger & Margaret Boyce
Doris E. Bruce*
Brian & Cynthia Buck
Agnes Camello
Michael & Elizabeth Canning
Karin E. Carl
Alice Chestman
Kevin & Suzanne Clark
Joseph & Sophia Clouse
Nicole Colantoni
Kathryn Burns Collins
Colts Neck Reformed Church
John Crudele
Veronica Cunningham
Dorothy Cusworth*
Michael* & Anne* D'Ambrosio
Joseph & Karen D'Amore
Joseph DeAngelis
Liz DeBeer
John & Carole Deignan
Michael & Carole DeMattia
Sandy Denison
Edward Devlin
Robert Dewyngaert Jr.
Dolores Drobny
Anthony & Michelle Durkin
Patrick & Judy Durkin
Willa M. Egan
Mr. Kenneth Pringle & Ms. Kathleen
Ellis
Agatha Emmer
Faber Daeufer & Itrato PC
Peter* and Christine Falvo
Marjorie Faulhaber
John & Mary Grace Finn
Mary Pat Fischer
Richard & Nancy Flanigan
Leslie & Teresa Freeman
Gaughran Law Firm
Kenneth C. Gibbons
Thomas & Patti Gilmour
Monica Giunco
Hamilton United Methodist Church
Patricia Hawthorne
Brian & Kim Heavey
William & Sandy Henning
Christopher J. Holl
Robert Hope

Robert Hutzel
J & M Saracco Fund
James & Kathy Jeffries
Jersey Shore Running Club
Myrtle Johnson
Kevin Joyce
K. Shaw Construction Co.
Rabbi Lewis Kamrass
Thomas & Barbara Keating
Richard Keil*
Patricia D. Kendall
Karen Kimberlin
Ron Kisch
Doris A. Klimowicz
Elizabeth A. Komar
Edward & Barbara Kostick
Verne & Joann Kreger
Anette Kreipke
Scott Kuzmic
Joan Lacagnina
Guy & Linda Lacorte
Vito & Joan Lasalandra
Kevin Leahy
Charles Leib & Patricia D. Koloski
Lewis Consulting Group
Walter P. Livingston*
Philip & Charlotte LoBuono
Richard Loeffler
Louis & Sons Drywall, Inc.
Gwendolyn Love
Doug & Laurie MacMillan
William Maiorano
Robert & Margaret Martin
Mary Maruschak
Andrew & Eileen McDonnell
Paul McEvily
Mansee Mehta
Lou Miceli
Sandra Millen
Geraldine R. Mondano
Monmouth Medical Center
Eugene & Karen Morton
Kathleen Mumma
News Corp Giving
Rebecca O'Neill
Senator Declan O'Scanlon
Gretchen Otis
Paul & Mary Owens
Richard & Mary Palazzo
Josephine Parrella
Bernadette E. Pastore
Mary Pender
Roberta Petrow
Mary Ann Phillips
Anna C. Pindar
Thomas Podolla
Dolores Politz
Jeanette Rodriguez
Richard Rooney

Ronald & Judith Rubinstein
Betty Rushton
Andrew & Olga* Sala
Hunter Scerbo
Carl* & Marguerite Scherr
Ruth Schlieper
Charles & Barbara Sciangula
Barbara Sheehan
Russ & Lindsay Smith
Theresa Smith
Jeff Solomon
Jo Ann Solomon*
June P. Stahlin
Bertran N. Steel Jr.
Kenneth & Joyce Steinberg
Michael & Tina Sterling
Stop & Shop Bloomin' 4 Good
Program
Sunset Farm Market
James & Patricia Supino
Anna Teodorczy
Joe Tote
Vin Gopal Civic Association
Robin K. Vinik
Doug & Pamela Virtue
Diane Voshell
Joanne Wade
V. Patricia Washington
Anna Wassil
Mitchell & Patricia Wein
John J. White*
Jacqueline Wild
Brian Williams
B.E. Yeamans
Jeffrey & Susan Yuskevich
\$100 - \$249
Russell Abrecht
Norma Adamitis
Affordable Housing Alliance, Inc.
Lee Albanese
Margaret E. Alfano*
Allen/Hui Family Charitable Fund
AllState
Asbury Park Chamber of Commerce
AT&T
Robert & Maria Baker
Maira Bannon
Jarill Barry
Thomas & Theresa Beck
Joe & Kathleen Beggans
Joseph A. Beggans
Julianne Benisch
Karen Battle Berger
Ron & Denise Bermel
Michael & Joan Berzansky
Frank Besignano
Terri Bevilacqua
Christopher & Audrey Boccabella
Joseph & Lorieta Bogdan

Terrence & Eileen Bolan
 Jeff Bond
 Kate Boskey
 Richard W. Boyce
 Peter & Jean Brain
 Brandywine Living at The Sycamore
 Jack Bregman
 Kenneth Brennan
 Alan Brenner
 Eleanor J. Breslin
 John & Kenna Brockriede
 Robert & Marilyn Broege
 Brookdale Community College
 Nicholas Brophy & Sarah Marie Martin
 Ann Brown
 Joseph & Marilyn Bruce
 Richard & Jill Brugger, Jr.
 Nancy Bryan
 Richard & Margaret Buckley
 John & Nancy Buckwalter
 Patrick & Bette Burgoyne
 Nicholas E. Burke
 Eric & Marguerite Burkett
 Robert* & Irene Burney
 Patricia Butcher
 Brenda Callahan
 Rita Campbell
 Campbell Supply Co, Inc.
 Michael & Brenda Canneto
 Benjamin J. & Natividad M. Canto
 Stephen & Christina Carlidge
 Lilia Carroll
 Ronald P. Catalina
 Catholic Daughters of the Americas,
 St. Elizabeth of Hungary
 James & Kathy Caulfield
 Laura Celmer
 Robert Cerco
 Paul Chalet
 Christine Hanlon For County Clerk
 Church of St. Clement
 James & Vera Ciavaglia
 Gary Ciliberto & Jennifer Naughton
 Brian & Heather Clark
 Catherine Clark
 Michael P. Clark
 The Codispoti Foundation
 Matt Collier
 James & Marie Collins
 Vincent Colonna
 Eileen Comer
 Community Affairs & Resource Ctr.
 Nunzio Competiello
 John N. Conforti
 Congregation Torat El
 Harry & Elena Coniaris
 Peter & Laura Connell
 John & Patricia Connelly
 Antoinette Conover

Harry & Lee Copperthwaite
 Robert Cosentino
 Mr. & Mrs. Jeffrey Covello
 Danny Croak
 Brian & Sharon Cumiskey
 Colleen Curtis
 Paul Cusa
 Richard & Beth Damico
 Louie D'Amico
 Dani Risi
 Donna Davidson
 Edward & Claire Day Jr.
 Mary Carol Day
 Kathleen DeBonis
 Virginia M. Decker
 Joseph Derario, DMD
 James & Sue Desmond
 Detail Doctor
 James Dettlinger
 Theresa DiLieto
 Matthew Doherty
 Joseph & Mary Dougherty
 William Duffy
 Dynamic Engineering
 Thomas & Mary Eagan
 Sheila Eberhardt
 Staff EBFP
 Paul & Marjorie Edelson
 Pentti & Nancy Ehrola
 Frances M. Elward
 Equity Enterprises, Inc.
 John Feery
 Ann Ferguson
 James & Cathy Ferrier
 Stephanie A. Ferrier
 Fifth Generation, Inc.
 Patrick Fitzsimmons
 Richard Fitzsimmons
 Randy Fodero
 Stephen Foley & Elisabeth Kaplan
 Laura Frank
 Al & Marie Freda
 Friends of Golden for Sheriff
 Friends of Tom Arnone
 Robert & Dorothy Frost
 Gwen Furst
 Richard & Barbara Fuschetti
 Terence Gallagher
 Patricia Gallo
 Russell Gartz
 Mary Gasser
 Suresh George
 The Gillette Family
 Richard & Elizabeth Gilman
 Robert Giordano
 Michael & Theresa Glynn
 Thomas M. Glynn
 Victor* & Carmella Gonnelli
 Evan & Martha Goodman

Vin Gopal
 Karl D. Gordinier, Jr.
 Francis & Sharon Gorman
 Richard & Dale Gornik
 William* & Marilyn Griffin
 Gloria Grivner
 Gregory J. Groman
 Barbara Hall
 Vita Halperin
 Mark Hampton
 Paul & Joy* Hancock
 Marty & Donna Hansen
 Judianne Hare
 Charlie Harte
 Philip & Antoinette Hatt
 Mark R. Heavey
 Michael Heavey
 Thomas & Cynthia Heavey
 Reena Heenan
 Peter Hendricks
 Thomas & Jean Herrington
 Kimberly Heyniger
 Edward & Kathleen Hickey
 Cynthia Hische
 Michael & Betsy Hoberman
 Michael Holick
 Mary Ann Holinda
 William & Angela Homa
 Peter & Carla Hussey
 Valerie Hval
 Eleanore Hyer
 Suzanne Iacono
 Lawrence & Cecilia Iannaccone
 Gary & Ginny Ingold
 Italian American Assn / Ocean Twp.
 Frank & Andrea Jacobs
 Frank Jacobs
 Inga Johannesen
 Johnson & Johnson
 Genee Joyce
 Samuel Kashdan
 Robert B. Keating
 Frank J. Kelly
 Nancy Kennedy
 Baart B. Kichikov
 Ulumscha Kichikov
 Steven* & Sheryl Kimball
 Leon & Christine Klaffer
 Marianne Kruthers
 Elizabeth Lambdin
 Robert Lampinen
 Bryant Larre
 John M. Lee & Jane Heine
 Thomas Lee
 Joan Leibowitz
 Maxine Leiner
 Jerome Lemanowicz
 Lenskold Group
 Karen Levinsky

Jane Lies
Michael Lippencott
Gerald & Victoria List
Frank & Jenne Loftus
John Lombardo
Michael Longo
Zach Lorelli
Anthony Lucarelli
Maria Lyons
Madden Law LLC
Mary Catherine Mahon
Kevin Mahoney
Joseph & Diane Maloney
Harry Manesis
Jana Manning
Joan Manos
Jessika Markland
John V Mastrolia
Linda Mattaliano
Cheryl Matthews
Joanne Maxwell
Steve & Elizabeth McCarthy
John & Eileen McCormack
Madeline McEvily
Martin & Marianne McGann
Francis J. McGarvey, Jr.
Anne McGilvray*
Richard McGowan
Kyle McGrady
Kevin McIver
William McKenna
David & Mary McLaughlin
Kathryn McLaughlin
Richard McLaughlin, Sr.
McLoone's Restaurants
Christopher & Patricia McLoughlin
Lisa McNamara
Robert Mendze
Ronald & Linda Menello
Robert & Regina Mercier
Microsoft
Christopher Miller
Cornelia M. Miller
Melissa Miller
Michael J. Miller*
Sean Miller
Tom & Joan Mitchell
Frank & Bonnie Monteforte
Cecilia A. Montoya
Glenn & Margaret Morgan
Christina Mueller
Edward & Katherine Mueller
Chris & Debra Mumford
Patricia F. Murphy
Thomas & Gloria Muscenti
Sally Neal
Robert & Shirley Neff
Catherine B. Nelson
Milena Nemec

Patricia M. Nielsen
Lee & Emilie Nisenson
NJECC
John Nolan
Sylvia Noyes
James J. O'Brien
Matt & Andrea O'Brien
Sonja O'Brien
William O'Brien
Cynthia O'Connell
Kerry & Judith O'Connor
Geraldine O'Dowd
Theodore & Julie O'Grady
Shannon O'Hara
Ronald & Bernice Orzechowski
Tamara Osbourne
Lester & Agatha Owens
Thomas & Gloria Pagano
Jimmy Palsteras
Charles & Janey Parker
Hunt Parry, Esq.
Luisa Paster
Thomas* & Irene Pattwell
Michael & Joan Pawlish
Joe Paytas
Herman & Lenore Perlowin
Peter P. Petrecca Jr.
Frederick Plate
Barry Pollack
Rorry Porr
Constance Poulakos
Alan Prochazka & Karenbeth Tilden
Vincent & Alice Quinn
Tracy Rademacher
Frederick Raffetto
Raymond Raines
Holly Rapport
Dorothea Rasmussen
The Rebirth Church
John Reed
Jeanne M Reichardt
Victoria Reis
Morris & Mary Rice
Michael Rochonchou
Dalia Rodriguez
Brian & Cathleen Rogers
Brian & Mary Jo Rogers Kevin &
Maryann Rogers
Mary Catherine Rogers
Ramona Roman*
Thomas & Alison Ruff
Frank & Colleen Russo
Robert Russo
Rosanne Ryan
Christopher & Virginia Sacchi
Richard & Sheila Sachs
Marilyn Saiewitz
Ray & Lauren Salani
Maureen Samaha

Stephen & Cynthia Samaha
Rose Sammons
Annette Saxer
Robert & Donna Scally
Robert Schaad
Paula Schildge
James Schott
Douglas Schultz
Arthur & Joan Scott
Charles H. Scott, Sr.*
Stuart Scott
Robert & Valerie Seeley
Robert J. Selden
Kathleen Seymoure
Jacalyn Sharpe
Christopher Shaw
Roberta Sheridan
Richard Sieb
Alan & Deborah Silberberg
Lila Singer
James Sinkhorn & Terese Walker
Rob Slifer & Michael Miller
James & Elizabeth Smith
Lawrence & Barbara Smith
Maryellen Smith
Jean Soldo
Robert D. Waitt & Mary E. Solecki
Norunn Sorli
Speech Language Learning Connection
Spring Lake Arbors
F. Donald & Fortunate Squillante
Hardwick & Cheryl Stires
Raymond A. Strong
Wendell Stuckey
Stephen & Mary Suto
Paul & Nancy Sutor
Vincent & Reana Tabora
John & Mary Tassini
Amy Tetreault
Kenneth Thompson
Alyce M. Tilton
Richard & Kathleen Tokarski
Anthony & Barbara Tomaino
Judith Torcivia
Antonio Toto
Audrey Tracey
Ronald & Donna Troppoli
Christopher Tufts & Kelli Cumiskey
Lucy Tully
Allison Tyler
Harold & Kathleen Uhrig
Matthias & Kathryn Van Oosterhout
Peter & Carmel Vickers
Thomas J. Vignola
Therese M. Vina
Charles & Ilene* Viviani
Richard & Susan Wade, Jr.
Greg Wagner
Deborah Walker

William Ward & Donna Schneiderman
 Raymond & Catherine Washburn
 Linda Watson
 John & Fain Webb
 John L. Wengler*
 Sherri West
 Thomas & Beverly West
 Howard* & Carole White
 Thomas & Carol White
 Sandra Whitehouse
 Philip* & Elizabeth Wilderotter
 Michael Wireman
 Mark & Patricia Woehnker
 Rosemary O. Wright
 Kathleen Yuro*
 Jason Zaro
 Mary Kay Zilinski
 Colette Zingale
 Jacqueline Zurla

\$50 - \$99

David & Jean Anderson
 Mary Pat Angelini
 Richard & Kathleen Ankiewicz
 Atonement Lutheran Church
 Andrew & Cathy Balto
 Bill & Suzanne Barnhurst
 John Barone
 Adele Barree
 John A Bassi
 Barbara Benjamin
 Jay & Tracey Berkowitz
 Steven F. Bianco
 Janice Bihler
 Larry & Carolyn Bissey
 Frank & Sarah Blozen
 Elliott* & Susan Bremmer
 Bristol-Myers-Squibb
 Jonathan Burnley
 Donald & Daryl Burtis
 Megan Campbell
 Christie Cancro
 Anthony & Madelyn Caporaso
 Marie Caprio*
 Vito Cardone
 Kelly A. Carpenter
 Michael Caruso
 George & Toni Casha
 Kurt & Janet Cavano
 Chris Thomas State Farm Insurance
 Companies
 Joseph & Barbara Christiana
 Frank Cleary
 Edward Courter
 Mr. & Mrs. Daniel Covello
 Bobbi L. Dailey
 Joseph & Joan Daurio
 Gerard Del Pazzo
 Gerard A. DelTufo*
 Nicole M. DeMaio

Jerry & Margaret Diglio
 Mary Pat Dolan
 Anthony & Vera Dominic
 James Donechie
 Andrea Donner
 Peter & Louise Donoghue
 John Duffy
 Aedan & Carol Dunphy
 Leon & Wendy Dutch
 Karen Escobedo
 Carol Evans
 John* & Dorothy Farrell
 Michael & Gail Fiorillo
 Gary & Toniadele Flyge
 William & Janet Flynn
 Margaret Formica*
 Marion Formichella
 Brendan & Mary Gallagher
 Gannon Plumbing
 Thomas & Patrice George
 Kathleen Glynn-Spratford
 Don Gordon-Wylie
 Janet P. Graham
 William & Sybil Graubard
 Saverio & Francis Greco
 Margaret Grilli
 Edward Gulba
 Frances H. Haliotis
 Danielle Hartz
 Nella Harvey
 James & Marie Hawkins
 Donald & Kim Hazley
 Paul & Christine Heine
 Beth Heinz
 Karen Hennessey
 David & Vivian Hermanson
 Stuart & Nancy Heymann
 Blanchard Hiatt
 Mary Hicks
 Homes & Land
 Robert and Laura Howe
 Jeffrey and Brenda Hunt
 Erica Infante Neill
 Steven and Beverly Itell
 Charlotte Jenkins
 Jack & Coleen Johnson
 Linda Johnson
 Connie Joyce
 Mary Junda
 Rubin Katz*
 Irene Kerber
 Maria Kresofsky
 Carol A Krupa
 Jim Lenskold
 Ronald & Danielle Lettieri
 Chris Longo
 Joyce Luttrell
 F. Clark & Kathleen Lydic
 Larry & Barbara MacPherson

Margaret Malinowski
 Richard & Carol Maloney
 William & Jean Anne Manigold
 Nancy Marion
 Victor* & Elda Marotti
 Michael & Margaret McCormick
 Michael* & Marie McGarry
 Joyce McGowan
 James & Mary McHugh
 Patrick & Diane McLaughlin
 John McNeil
 Mario Medeiros
 Mary Meehan
 Barry & Barbara Miller
 John & Laurie Moore
 John T. Morgan
 Thomas & Jennifer Morris
 Karyn Moskowitz
 Nancy Murphy
 Rabbi Fred Natkin
 New Jersey Hospital Association
 Henry & Carol Ney
 Donald & Gaylen Nolan
 Eleanor Novek
 Irene Nuccio*
 Kathleen O'Brien
 Mary E. O'Driscoll
 Eivind & Susan* Oftedal
 Patricia O'Neill
 Catherine O'Toole
 Marisa Palmisano
 Marguerite J. Parelli
 Carlos & Albertina Perez
 Gary & Patricia Petersen
 Charles & Irene Petry
 Maureen Poling
 Anne S. Quinlan
 William & Karil-Anne Ragan
 Nils Rasmussen*
 Eileen Reese
 Doreen Rizzi-Mugno
 Robert W. Kirwan Appraisal, LLC
 Yolanda-Maria Rodriguez
 Debra Roselin
 Craig Rubano
 Joel Rubio
 John Russell & Sharon Sudol
 James & Barbara Sabaitis
 Arlene Saltz
 Michael Sammartino
 Bill Saporito
 Martin Schlosser
 Kelly Schott
 Ruth Schreier
 Charles & Marie* Scialla
 James & Carol Scollay
 Diane Shelton
 Karen Shelton
 Carol Siliato

Michelle Silverman
 Emma Skuby
 Raymond Slocum, Jr.
 Robert W. Smith
 Ruth Smith
 Andrew Snorton
 Ed & Holly Spector
 Jennifer Sryfi
 Christine Stearns
 John Stueck
 Carol Sullivan
 Ima S. Sylvia
 Paul Tamke
 Marjorie Thrope
 Bregida Tillman*
 Susan Tinacci
 Kathleen Tjunin
 Joseph & Tanya Tomaino
 Nellie Treiber
 Gary & Corinne Truax
 Demetrios & Elizabeth Tsoutsas
 Robert K. Ulrich
 Sharon Vunk
 Darlene Waggnier
 Robert & Anita Weiner
 Philip & Maria Welch
 Judith Wigdortz
 Maureen Williams
 Tom & Jeannette Yorke
 Anna Yurko
 Nobuko Zajac
 Vera M. Zea
 Robert & Deborah Zilai

Up to \$49

Cristina Aguilar
 Matthew Alkon
 Amazon Smile Foundation
 Marie Anderson
 Agnes Antonelli
 Antoinette Ardolino
 Victoria Arzano
 Joseph Aureli
 Barbara Bakunas
 Melissa Banks
 Charles & Sharon Barham
 James R. Beamish
 Briana Bee
 Lisa Berry
 Edith Blake
 Cleo Boiko
 Samson & Valerie Boodagthians
 Diane Brinkley
 Candice Brown
 Caren Bumm
 James Henry Burke
 Anne E. Butler
 Kevin & Joan Byrne

Thomas & Barbara Cahill
 Angela D. Calabrese*
 Victor & Barbara Calvo
 James & Frances Camoosa
 Lillian Chang
 Joan M. Chasey
 Cigna
 Ian & Sharon Cohen
 Theophilo Correia*
 Ed & Joan Cramer
 Joanna Crilly
 Cathy Cuniff
 Christa D. Curley
 Kerry Dacas Johnson
 Scott Dadika
 Steve & Patti D'Andrea
 Stephen & Linda De Groot
 Dell
 Janet Derisi
 Catherine Dimon
 Jill Dolan
 Edward & Marianne Dowling
 Jen Dunn
 Martha Dunphy
 Joanne Escovar
 William & Bonnie Faccidomo
 Louise Ferrara
 Amy Ferrier
 Vincente Figueroa
 Thomas & Carol Finch
 Joseph Fiore*
 Stephan & Ann Fiorino
 Janet Fischer
 Julia Fischer
 Maureen Fitzhenry
 James & Mary Fleitz, Jr.
 Jaime Flores
 Francisco & Cecilia Franco
 Brenda Freeman
 Thomas & Joyce Fritz
 Les & Deborah Fromkin
 Emmet Fruchter
 Randy Fruchter
 Steve Gazdek*
 James Gillespie
 Sophia Godin
 Timothy & Jill Gordon
 Tracy Graves
 Giuseppe Grillo
 Stuart & Angela Grodan
 Joseph & Angelina Guarino
 Susan M. Gurman
 George & Lynn Hahm
 Elizabeth Hardy
 Russell & Margit Harmstead

Thomas Harrison
 Sara Hayet
 Katherine Healey
 Mary Height
 June Heindel
 Claire Higgins
 Theodore & Della Hill
 Terrance & Crystal Hills
 Joanne Hirsch
 Peter & Diane Hoff
 Robert & Catherine Hoffbauer
 Naomi Hogan
 Donald & Linda Hopkins
 William Horwedel*
 Paul & Pauline Hunter
 Nora Hyland
 Anthony Ippolito
 Francine Jacobs
 Josephine Jankos
 Richard & Alice Jesmajian
 Donald Johnson*
 Glenn & Victoria Johnson
 Georgia R. Kaminski
 Peggy Keane
 Donna Kendall
 John & Joan Kenney
 Dennis & Betji Kijowski
 Mary Jane Killeen
 Mary LaRusso
 Edward & Mary Lapore
 Gary & Kristie Linington
 Domenica Loschiavo
 Frank Luthe
 Valerie A. MacFie
 Stephanie Mackoul
 Lester & Amy Mallet
 Dolores Mansueto
 Lesley Martin
 Tanya Martin
 Phillip Martinez
 Dennis McCabe
 Mackenzie McDonald
 Cheryle McDonough
 Carolyn McKinley
 Nancy Mcnamara
 James McTernan
 Patricia Mead
 Gary Mellon
 Dennis & Maureen Melofchik
 Maria Micchelli
 Ray & Maureen Miller
 Frances Minneci
 Jamie Montero
 Robert & Joy More
 Donna Morgan

Christynn Morris
 Robert E. Morris
 Kaitlin Moyes
 Thomas Muldowney & Margaret
 McMahon
 Tara Murchison
 John & Robin Nacarlo
 Emilia Notaroberto
 Jessica Notaroberto
 Gerald O'Keeffe
 OneHope
 Charles A. Pachucki
 Michael & Nancy Palutis
 Ralph Papaleo
 John Patino
 Mildred Patton
 Joan Paulin
 Robert Perkins
 Ruthann Picos
 Margaret I. Picozzi
 Cheryl Podmajersky
 Philomena Porcello
 Jessica Potter
 Henrietta Prendergast
 Otto Pudder*
 Phyllis T. Quinn
 Lori Minky Radcliffe
 Mary Reed
 John Regan*
 William & Antoinette Rehrig

William Reilly
 Margaret Reinhardt
 Miguel Reyes-Pahuneto
 Blancell Ribon
 Maryann Roper
 Sabina Rotondo
 Sandra Rowland
 Robert & Susan Rubin
 Mae C. Rugg
 Magdalen Sangiolo
 Cherie Santillo
 Corey Schade
 Gale Schoenemann
 Gregory M Schweiker
 Maria Sciara
 Jennifer Scisco
 Brenda Scott
 Lawrence & CarolAnn Scott
 Margaret Severino*
 Jean Shafer
 Todd & Annmarie Shafer
 Gayle Shriver
 Wayne & Dee Frye
 Jen Souder
 Carol Spampinato
 Millie Spinelli
 Robert Sproat
 Robert & Susan St. Lifer
 St. Stephen's AME Zion Church
 Robert & Grace Stark

John H. Strange
 Julie Stutzman
 Doris June Sullivan
 Nina Summerlin
 Eugene & Gloria Szydal
 Robert & Mary Louise Taylor
 Kevin Thorpe
 Ellen Tooker
 Dolores Trotter*
 Victor & Josephine Urgo
 Elisa Valentino
 Paul & Deirdre Vignone
 Eileen J. Vitale
 Patricia Wagner
 Ruth M. Wagner
 Susan Walters
 Robert & Jane Wassmer
 Joan M. Wicklund
 Pauline Williams
 James Zielinski

INTERFAITH NEIGHBORS MEMBER CONGREGATIONS

Interfaith Neighbors was founded in 1988 when a group of faith-based congregations came together to address the growing problem of homelessness in Monmouth County. Member Congregations are those that have made a financial contribution to Interfaith Neighbors in the current fiscal year. These contributions are designated to support the Rental & Mortgage Assistance Program, our founding program that continues to work to prevent homelessness amongst working families in Monmouth County.

Atonement Lutheran Church
 Catholic Daughters of the Americas, St. Elizabeth
 of Hungary
 Church of St. Clement
 Colts Neck Reformed Church
 Congregation Torat El
 First United Methodist Church of Oakhurst
 Hamilton United Methodist Church
 Holy Trinity Lutheran Church
 Jewish Communal Fund
 Manasquan United Methodist Church
 Monmouth Reform Temple

Parish of St. Teresa of Calcutta St. Francis Society
 Presbyterian Church at Shrewsbury
 Protestant Community of Seabrook Village
 Spring Lake Presbyterian Trust
 St. Andrew's United Methodist Church
 St. George's by-the-River Episcopal Church
 St. Jerome Roman Catholic Church
 St. John's Episcopal Church
 St. Mary's of the Assumption
 St. Paul's Ocean Grove Church
 St. Stephen's AME Zion Church
 United Methodist Church of Red Bank

HONOR & REMEMBER

GIFTS GIVEN IN HONOR OF...

NICHOLAS BROPHY

Keith Elias

PETER CANCRO

Kevin Leahy

WALTER "CHIP" CRAIG

Nick & Marybeth Defabrizio

Patrick & Diane McLaughlin

Minding Your Mind

LIZ DeBEER

Mary Carol Day

Craig Rubano

NANCY FEINBERG

John Stueck

STEPHANIE A FERRIER

Susan Abraham

Michael & Betsy Hoberman

Cheryl Podmajersky

STEPHANIE HEINLEY

Cheryl Matthews

THE IANNACONE FAMILY

Jane Lies

INTERFAITH NEIGHBORS

STAFF & VOLUNTEERS

Thomas & Bonnie Johnson

JOHN & SHARON KREGER

Joann & Verne Kreger

THE LAVIN FAMILY

Jen Dunn

MICHAEL & ROSEMARIE

LYONS 50th WEDDING

ANNIVERSARY

John & Nancy Buckwalter

William & Angela Homa

Christina Mueller

Ima S. Sylvia

CHARLES PARTON

John Lombardo

CHRISTINE MARCHGRABER

Inga Johannesen

JOSEPH J MARMORA

Kevin & Mary Buell

Bernadette Reidy

ROSA MIGLIAZZA

Todd & Annmarie Shafer

KARA O'SHAUGHNESSY

Cheryl Matthews

RABBI SALLY PRIESAND

Allen/Hui Family Charitable Fund

Kate Boskey

Rabbi Lewis Kamrass

Stuart & Cora Tuchband

RICHARD R SANTORE

John Lombardo

THOMAS SCERBO

Hunter Scerbo

PETE SCHOTT

James Schott

Kelly Schott

KEN STEINBERG

Beth Heinz

REANA TABORA

Vincent & Reana Tabora

LINDA TUS

Mary Reed

ROBERT WEINER

Stuart & Nancy Heymann

GIFTS GIVEN IN MEMORY OF...

GUSTAVE "GERRY"

BARNETT III

Joseph & Lorieta Bogdan

HELEN FRANCIS BERTUZZI

Julianne Benisch

Robert Lampinen

ALTHEA "CHICK" BORMIDA

Barbara Benjamin

Kevin Bormida

Nicholas E. Burke

Megan Campbell

Michael P. Clark

Nicole M. DeMaio

Stephanie A. Ferrier

Thomas & Jean Herrington

Marianne Kruthers

Frank & Jenne Loftus

Joseph & Ginny* Marmora

Michael & Margaret McCormick

Nancy McNamara

Patricia O'Neill

Bernadette Reidy

Jean Shafer

Richard Sieb

Spring Lake Arbors

Paul Tamke

ANGELINA BUICK

Brian & Kathleen Fitzpatrick

JAMES EMMER

Agatha Emmer

MARILYN EPSTEIN

Ian & Sharon Cohen

William & Bonnie Faccidomo

Timothy & Jill Gordon

Richard & Alice Jesmajian

Lester & Amy Mallet

Norman & Lesley Margolies

Eileen J. Vitale

JOHN A. FALCO

Richard & Nancy Flanigan

MICHAEL FORNINO

James & Vera Ciavaglia

MICHAEL J. GABLER

Annette Ross

BARBARA GOLDSTEIN

Robert & Julie Goldstein

ROBERT GORMAN

Robert & Susan Hayes

IRIS M. HALL

New Jersey Hospital Association

Jennifer Sryfi

MONA HEAVEY

Joseph Aureli

Ronald & Judith Rubinstein

Benjamin Harvey Company, Inc.

Burt & Carol Barham

Brandywine Living at The Sycamore

Robert & Marilyn Broege

Cigna

William Duffy

Carney & Patricia Gatta, Jr.

Robert & Susan Hayes

Brian & Kim Heavey

Karen Hennessey

Connie Joyce

John & Bertha Livingston

Jessika Markland

John B. Meagher
Frank & Brenda Mergenthaler
Morgan Stanley
Rebecca O'Neill
Richard & Mary Palazzo
Jimmy Palsteras
William Ward & Donna Schneiderman

GLORIA HOPE

Kathryn Burns Collins
Robert Hope
Gary & Ginny Ingold
Joel Rubio
Diane Voshell
Patricia Wagner

LARRY JONES

Brian & Kathleen Fitzpatrick

BERNARD L. KELLY

Andrew Kelly, Esq.

GLORIA KIENLE

Debra Roselin

DR. MARTIN LUTHER KING, JR

Karen Battle Berger

THOMAS J. KITRICK

Mark & Annette Kitrick

ANNEMARIE LEUKROTH

Joanne Hirsch

VIRGINIA "GINNY"

MARMORA

Norma Adamitis

AHS Rehab Outpatient Services
Management Team

Mary Pat Angelini

Thomas & Alison Ankiewicz

The Auxiliary of Robert Wood Johnson
University Hospital

Patricia Bailey

Cynthia Barham

Bill & Suzanne Barnhurst

Ronald & Judith Rubinstein

Joe & Kathleen Beggans

Bernard & Marion Berry

Joseph & Lorieta Bogdan

Samson & Valerie Boodagthians

Peter & Jean Brain

Linda Brockriede

Brian & Cynthia Buck

Anita Burke

Nicholas E. Burke

Eric & Marguerite Burkett

Rita Campbell

Anthony & Madelyn Caporaso

Laura Celmer

The Codispoti Foundation

Matt Collier

James & Marie Collins

Stefanie R. Colton

Eileen Comer

John & Patricia Connelly

Antoinette Conover

Harry & Lee Copperthwaite

Richard & Beth Damico

Joseph Derario, DMD

James & Sue Desmond

Detail Doctor

Jerry & Margaret Diglio

Mary Pat Dolan

Andrea Donner

Dolores Drobny

Dynamic Engineering

Sheila Eberhardt

Paul & Marjorie Edelson

Jane Egelhoff

Karen Escobedo

Peter* & Christine Falvo

Richard & Dorothy Fama

Stephanie A. Ferrier

Mary Pat Fischer

Marion Formichella

Al & Marie Freda

Gerald & Maryanne Freda

Leslie & Teresa Freeman

Richard & Barbara Fuschetti

Garvin & Patricia Gatta, Jr.

Thomas & Patrice George

Ronald & Kathy Gillaspie

William & Madeline Gilman

Bob & Eileen Gilmore

Mary Giunco

Kathleen Glynn-Spratford

Margaret Grilli

Joseph & Angelina Guarino

Elizabeth Hardy

Judianne Hare

Robert & Susan Hayes

Donald & Linda Hopkins

Suzanne Iacono

Lawrence & Cecilia Iannaccone

Frank & Andrea Jacobs

James & Kathy Jeffries

Thomas & Bonnie Johnson

Kevin Joyce

Jules L. Plangere Family Foundation

Peggy Keane

Thomas & Carolyn Kononowitz

Bryant Larre

Kevin & Midge Leys

John & Bertha Livingston

Philip & Charlotte LoBuono

Richard Loeffler

Michael & Rosemarie Lyons

Richard & Carol Maloney

John & Kathy Marmora

Robert & Margaret Martin

Steve & Elizabeth McCarthy

Paul McEvily

Martin & Marianne McGann

Mary Meehan

Robert & Regina Mercier

Frank & Brenda Mergenthaler

Lou Miceli

Melissa Miller

Glenn & Margaret Morgan

William & Sandy Mullaney

Nancy Murphy

Catherine B. Nelson

New York Jets

Henry & Carol Ney

Lynn O'Brien

Gretchen Otis

Paul & Mary Owens

Richard & Mary Palazzo

Charles & Janey Parker

Gary & Patricia Petersen

Vincent & Alice Quinn

Jeanne M. Reichardt

Bernadette Reidy

Brian & Mary Jo Rogers

Kevin & Maryann Rogers

Mary Catherine Rogers

Frank & Colleen Russo

Robert Russo

Charles & Maureen Samaha

Stephen & Cynthia Samaha

Michael Sammartino

Annette Saxer

Robert & Donna Scally

Robert Schaad

James & Elizabeth Smith

Maryellen Smith

Russ & Lindsay Smith

Ed & Holly Spector

F. Donald & Fortunate Squillante

Raymond A. Strong

Judith Torcivia

Antonio Toto

Ronald & Donna Troppoli

Allison Tyler

Thomas J. Vignola

Doug & Pamela Virtue

John L. Wengler*

BOBBI N. MCCLINTICK

Jarill Barry
 Valerie Hval
 Dennis & Betji Kijowski
 Raymond Raines

JAMES MCCONNELL

Mary Pender

NANCY MCEVILY

Linda Mattaliano
 Christopher & Virginia Sacchi

LINDA MCKEAN

Derek DeBree

ANITA MCLEAN

Russell Abrecht
 Catherine Clark

Linda Bernaski
 Terri Bevilacqua
 Joanne Escovar
 Louise Ferrara
 The Gillette Family
 Marguerite J. Parelli
 Doreen Rizzi-Mugno
 Ray & Lauren Salani
 Todd & Annmarie Shafer

Carol Siliato
 Anna Teodorczy
 Maureen Williams

NILS L. RASMUSSEN

J & M Saracco Fund
 Robert B. Keating
 Leon & Christine Klafter

Joyce Luttrell

DR. STEPHEN SAFRAN

James & Vera Ciavaglia

MAX SINGER

Carol Evans

DEBORAH SMETANKA

Central Paint

J. GUY VILLAPIANO

James & Vera Ciavaglia

KENNETH WALKER

Daniel & Erica Grogan
 Homes & Land

MICHELE WALKER

Daniel & Erica Grogan

GINNY'S PANTRY

After the passing of Virginia "Ginny" Marmora, Ginny's friends came together and established a fund at Interfaith Neighbors in her memory. The Ginny's Pantry fund provides grocery store gift cards and food for families served by Interfaith Neighbors' Rental Assistance Program. The fund helps families facing a short term financial crisis put food on the table as they work to get back on their feet, during the holidays and throughout the year. Following is a list of contributors to this fund in 2022.

Cynthia Barham
 Linda Brockriede
 Joseph & Marilyn Bruce
 Brian & Cynthia Buck
 Rita Campbell
 Anthony & Madelyn Caporaso
 James & Kathy Caulfield
 Kevin & Suzanne Clark
 The Codispoti Foundation
 Antoinette Conover
 Richard & Beth Damico
 Joseph DeAngelis
 Detail Doctor
 Jane Egelhoff
 Peter* & Christine Falvo
 Richard & Dorothy Fama

Gavin & Patricia Gatta
 Thomas & Patrice George
 Ronald & Kathy Gillaspie
 Robert & Eileen Gilmore
 Judianne Hare
 Danielle Hartz
 Frank & Andrea Jacobs
 James & Kathleen Jeffries
 Thomas & Carolyn Kononowitz
 Kevin & Midge Leys
 Philip & Charlotte LoBuono
 James & Linda Marmora
 Robert & Margaret Martin
 Peter & Beth Micioni
 William & Sandy Mullaney
 Patricia F. Murphy

Catherine B. Nelson
 Henry & Carol Ney
 Richard & Mary Palazzo
 Josephine Parrella
 Gary & Patricia Petersen
 Brian & Mary Jo Rogers
 Kevin & Maryann Rogers
 Mary Catherine Rogers
 Charles & Maureen Samaha
 Roberta Sheridan
 F. Donald & Fortunate Squillante
 Joseph a& Tanya Tomaino
 Judith Torcivia
 Joanne Wade





MEETING THE MOMENT

The Campaign for Interfaith Neighbors

CAPITAL CAMPAIGN GIVING

The Meeting the Moment Campaign for Interfaith Neighbors was launched in the Fall of 2021. With a goal of \$18,000,000, the campaign will support the implementation of three capital projects: the Early Childhood Learning Center, Marmora Family Community Center, and the expansion of the Kula Urban Farm. By the end of 2022, \$15,858,321 in pledges and outright gifts have been secured. The listing below includes outright gifts and pledges to the Meeting the Moment Campaign for Interfaith Neighbors through December 31, 2022.



\$5,000,000 OR MORE

Peter & Tatiana Cancro

\$1,000,000 - \$4,999,999

Justin & Victoria Gmelich

The Grunin Foundation

Judith & David Rivkin Foundation

Abe & Linda Littenberg

The Paul & Margo Charitable Fund

\$250,000 - \$499,999

Nicholas Brophy & Sarah Marie Martin

Vincent & Ellen Forlenza

Monmouth County

\$100,000 - \$249,999

Laurence M. Downes

Steven & Amy Erlbaum

Gannett Foundation, Inc.

Paul L. McEvily

Reinvestment Fund

\$50,000 - \$99,999

Blair Family Foundation, Inc.

Donato, Hayes & Co.

Mary Owen Borden Foundation

New Jersey Natural Gas

\$25,000 - \$49,999

Anthony & Concetta Ambrosio

Builders' General Supply

Walter "Chip" & Andrea Craig

Kathleen Ellis & Kenneth Pringle

Margean V. Gladysz

Thomas & Carolyn Kononowitz

Joe & Sue Lemanowicz

Joseph & Ginny* Marmora

Spring Lake Presbyterian Trust

\$10,000 - \$24,999

Dennis & Diane Donato

John & Joanne Heavey

Robert & Judy Hogan

Thomas & Bonnie Johnson

James & Linda Marmora

John & Kathy Marmora

Paul Marmora

Linda B. McKean*

OceanFirst Foundation

Charles & Trudy Parton

Michael & Beth Paterno

Phil & Marilyn Perricone

\$5,000 - \$9,999

Katherine Durante

Peter & Linda Eno

Stephanie A. Ferrier

Mark & Carol Ann McLaughlin

\$2,500 - \$4,999

Bucklew Family Foundation

Rabbi Sally Priesand

\$1,000 - \$2,499

Mark & Jacquelline Brahney

Kevin & Mary Buell

Mark & Constance Duffy

Gwendolyn Love

Mr. James J. Marmora Jr.

Marie E. Marmora

Quinn & Lisa McKean

Vincent & Roseanne Petruzzello

Protestant Community of Seabrook

Village

Marilyn Schlossbach

Miriam Tetelbom M.D.

Tom Lepetich & Syd Whalley

Under \$1,000

Donna Andrucyk

Victoria Arzano

Carolann Ashby Nicholas

Esther Azar

Madeline Badalaty

Andrew & Cathy Balto

Melissa Banks

Tracy Bayer

Bob & Maryann Korsen Charitable

Fund

Kristina Bonatakis

Sarah C. Bonello

Roger & Margaret Boyce

Alan Brenner

Leanne Bridge
 Don & Diane Brockel
 Nancy Bryan
 Tim Cabrey
 Colleen Connolly
 Harry & Lee Copperthwaite
 Michael Cronin
 Colleen Curtis
 Stuart Davis
 Derek DeBree
 Virginia M. Decker
 Roger & Maureen Domal
 Thomas & Mary Eagan
 Chris Ehrenbard
 Robin Elliott-Preston
 Joann C Fischer
 Brian & Kathleen Fitzpatrick
 Richard & Nancy Flanigan
 Stephen Foley & Elisabeth Kaplan
 Evan & Martha Goodman
 Lisa Hamilton
 Linda Hampton
 Bonnie Hanlon
 June Heindel
 William & Sandy Henning
 Jesse Herdman
 Blanchard Hiatt
 Mary Anne Illes
 Karen Kahn
 Amit Khanna

Mark & Annette Kitrick
 John & Sharon Kreger
 Anette Kreipke
 Elizabeth Lambdin
 Dominic Latorraca
 Kevin Leahy
 Lenskold Group
 Nancy Loebel
 Chris Longo
 Richard & Amy Looney
 Louis & Sons Drywall, Inc.
 M & H Lyttle Charitable Fund
 Main Avenue Galleria
 Teresa Maltz
 Jana Manning
 Linda Mattaliano
 Pam McGovern
 Anita Meeks
 Conrad & Lynn Miller
 Jamie Montero
 Glenn & Margaret Morgan
 Kathleen Mumma
 Kathleen Oakley
 Sonja O'Brien
 Ocean Township Garden Club
 Mary E. O'Driscoll
 Marisa Palmisano
 Luisa Paster
 Jim & Sheryl Powers
 Marcia Rachlin

Radiant Resources
 Kathleen Reed
 Renova Environmental Company
 Michelle Rivenburg
 Maryann Roper
 Eleanor Rubin
 St. Andrew's United Methodist Church
 Robert & Susan St. Lifer
 David & Pam Saunders
 Paula Schildge
 Heidi Seitz
 Lawrence & Barbara Smith
 Miriam Solondz
 Elisabeth Stuper
 Paul & Nancy Sutor
 Gene & Mona Taetsch
 David & Sandra Taylor
 TBD, Inc.
 Marcia Van Note
 Paul & Deidre Vignone
 Deborah Walker
 John & Fain Webb
 John Weber
 William & Lois West
 Judith Wigdortz
 Ilene Winkler
 Rosemary O. Wright
 Jennifer Zarcone

CONTACT US

PAUL L. MCEVILY

Executive Director

WALTER "CHIP" CRAIG

Co-Executive Director

DANTE AGRESTI

Senior Program Manager of Nutrition/
 Meals on Wheels

LISA BAGWELL

Manager, Kula Urban Farm

CHRISTIE CANCRO

Communications & Development
 Coordinator

PATRICK DURKIN

Director of Real Estate Development

GILLIAN EDGAR

Director, Launch Center

STEPHANIE A. FERRIER

Senior Development Officer

EMMA HESS

Manager of Administration &
 Compliance - Rental & Mortgage
 Assistance

HARRIET LAKUSIEWICZ

Director of Human Resources

KARYN MOSKOWITZ

Coordinator, Building Healthier, More
 Equitable Communities

JUDY NELAN

Senior Manager of Homeless
 Prevention - Rental & Mortgage
 Assistance

BETH PATERNO

Director of Nutrition/Meals on Wheels

TRACY RADEMACHER

Director of Finance

DIANE SHELTON

Community Outreach Specialist

JOHN VACCHIANO

Project Manager, Real Estate
 Development

MATTHIAS VANOOSERHOUT

Manager, Kula Urban Farm

SEMAJ VANZANT

Development Director, Launch Center

KERWIN WEBB

Director of Strategic Initiatives

ADMINISTRATION, REAL ESTATE DEVELOPMENT, RENTAL & MORTGAGE ASSISTANCE, NUTRITION/MEALS ON WHEELS, FUNDRAISING

810 Fourth Avenue

Asbury Park, NJ 07712

P: 732-775-0525

E: info@interfaithneighbors.org

W: interfaithneighbors.org

LAUNCH CENTER, COMMUNITY OUTREACH, BUILDING HEALTHIER, MORE EQUITABLE COMMUNITIES

1201 Springwood Avenue

Asbury Park, NJ 07712

P: 732-455-0519

KULA URBAN FARM

115 Atkins Avenue

Asbury Park, NJ 07712

P: 732-455-0511